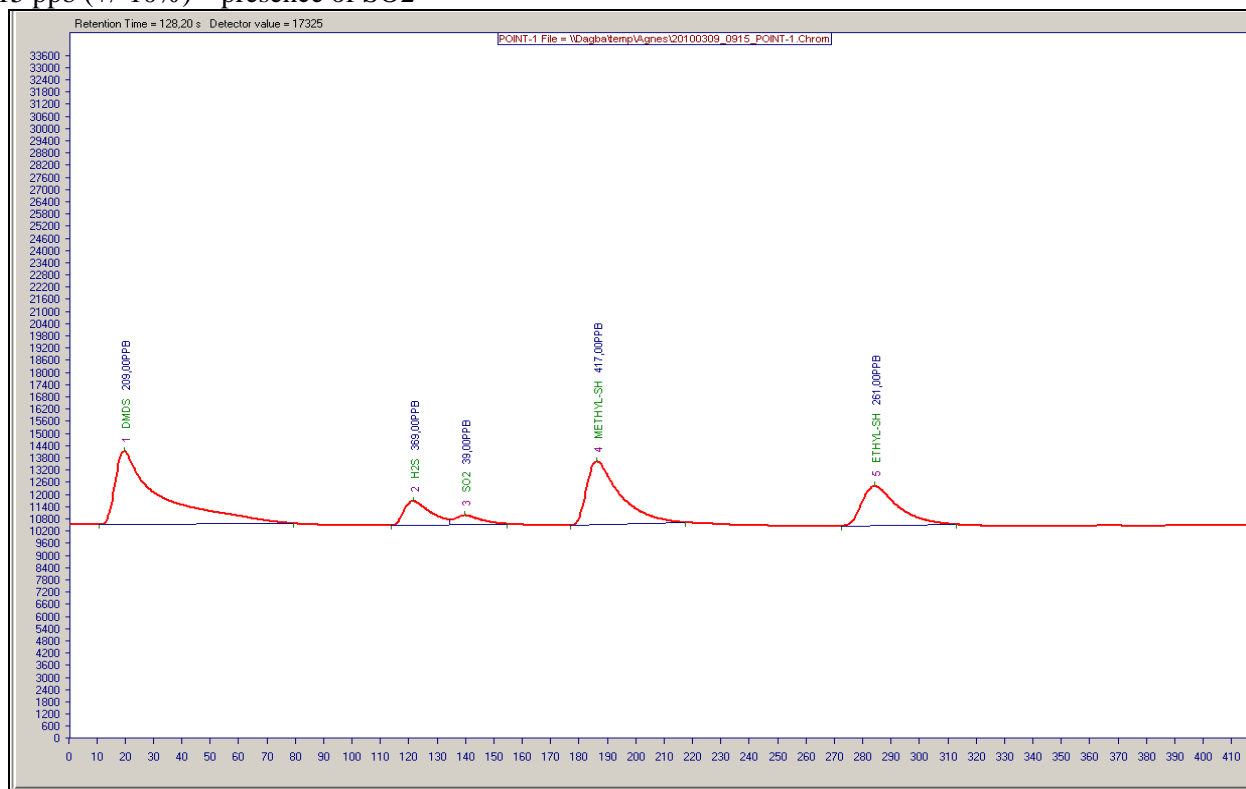


# TRSMEDOR applications

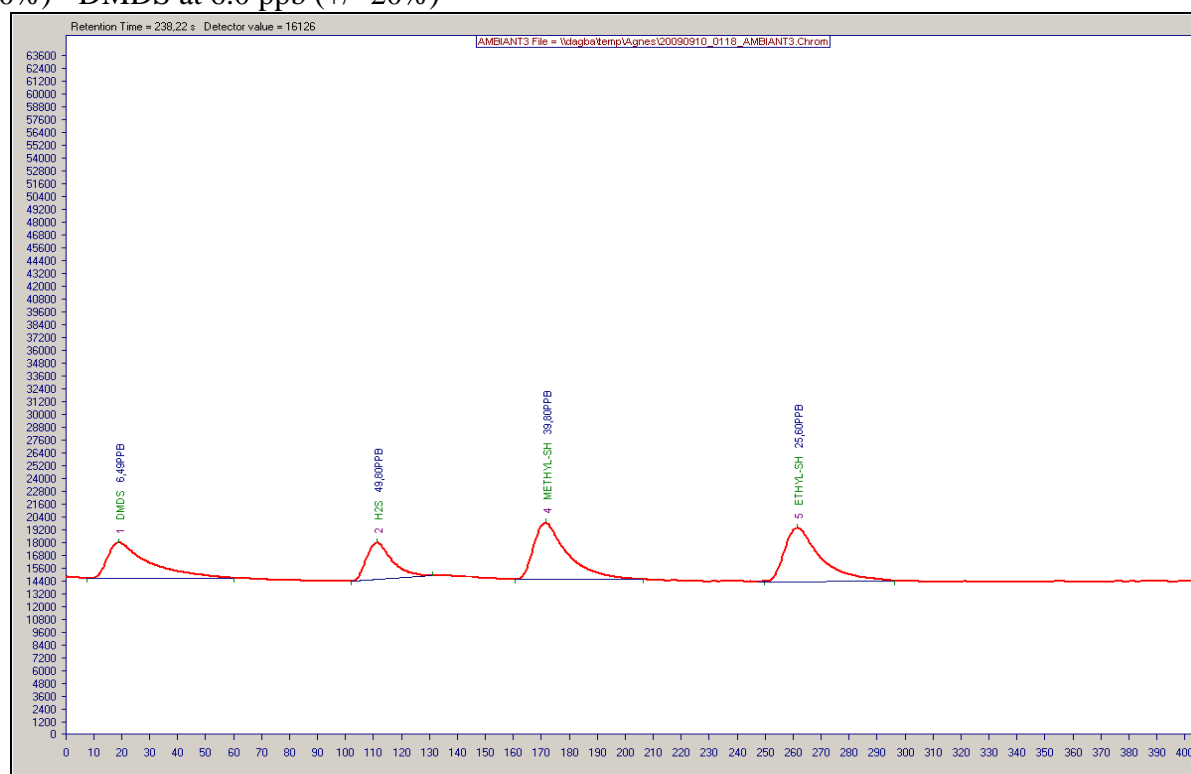
## (sulfur compounds analysis)

### I. Standard samples

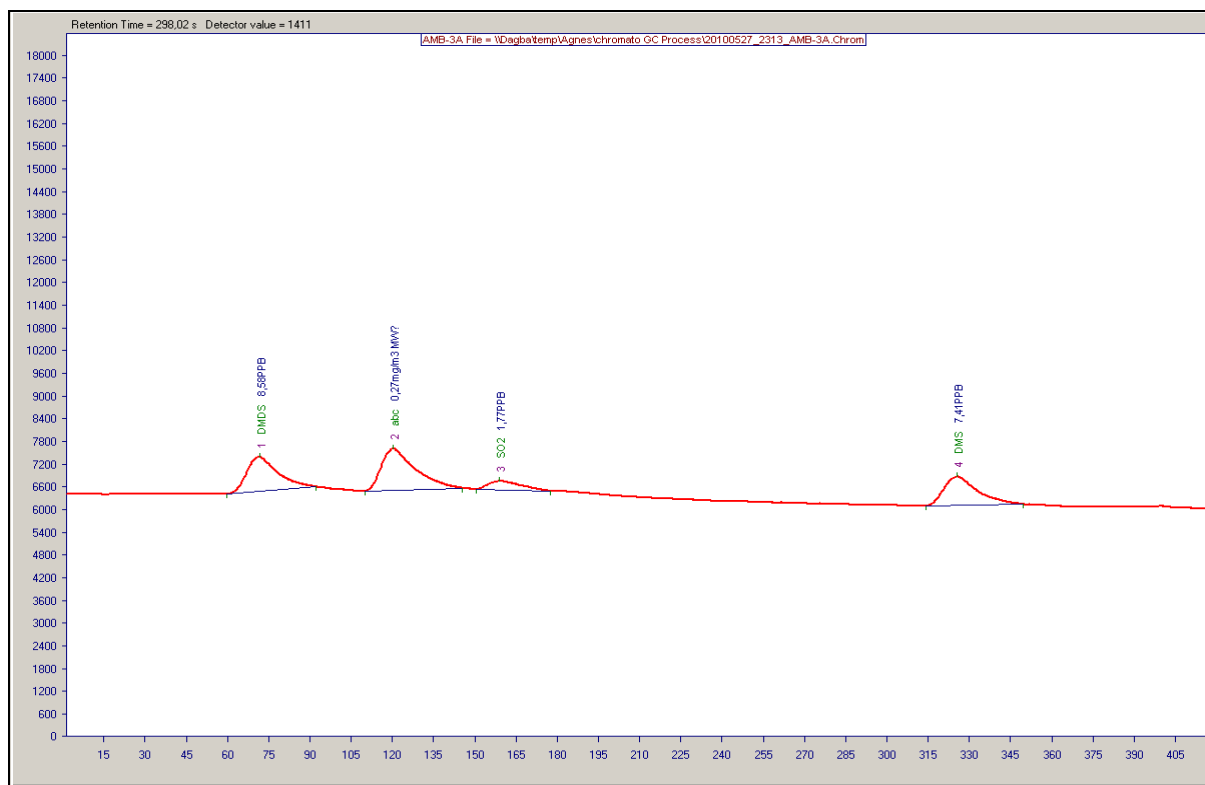
**Sample 1** : H<sub>2</sub>S at 394 ppb (+/-10%) - Methyl-SH at 422 ppb (+/-10%) - Ethyl-SH at 255 ppb (+/-10%) - DMDS at 215 ppb (+/-10%) – presence of SO<sub>2</sub>



**Sample 2** : H<sub>2</sub>S at 55.5 ppb (+/- 20%) - METHYL-SH at 44.2 ppb (+/- 20%) - ETHYL-SH at 28.4 ppb (+/- 20%) - DMDS at 6.0 ppb (+/- 20%)



## II. Sewage analysis



## III. Analytical conditions

Carrier gas : Air with a 4 ml/min flow rate

Oven : Column ; 30 m + 4 m ; 0.53 mm id

Detector : wet cell

Sample flow : - 100 ml/min

Program : analysis cycle = 600 seconds - Acquisition time = 420 seconds – Amplification = 3

Analyser calibrated from internal system calibration with DMS (+/-10%)

**BS calculated with autocal**