

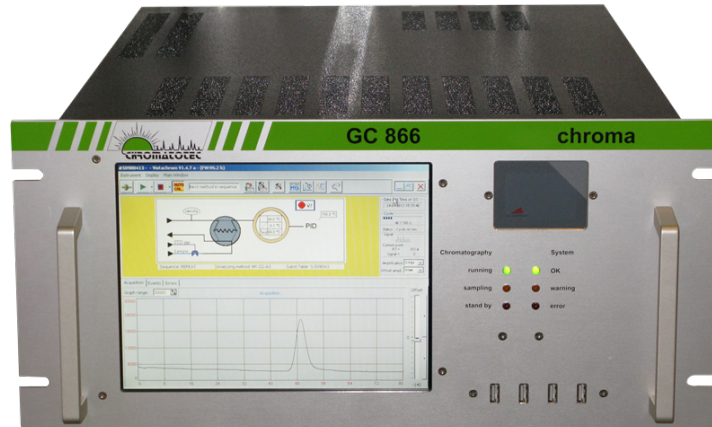
C C43C

C1 to C6+

CH₄CO₂N₂O₂H₂S*

chromEnergy

Continuous natural gas measurement
Automated system for measurements in the range: ppm or %



Model: C42022 (5U)

Main applications:

Heating value measurement
Natural gas composition
Propane composition
Product quality / process control

Targetted compounds and results:

C6+ / N₂ / CO₂ / C2 / C3 / IC4 / NC4 / NeoC5 / IC5 / NC5
ICV / SCV / WOBBE / Density / Relative density / Z mix / Mass molar
CH₄ / CO₂ / N₂ / O₂ / H₂S

Main markets:

Petrochemical
Gas transport
Process
Biogas

Standards:

ISO 6974-4,
ISO 6976 (calculation in accordance with ISO 6976)

[SCAN or CLICK ME](#)



*In option Chromatotec® is specialized in VOC, Sulfur and permanent gases analysis down to ultra trace levels (% , ppm, ppb, ppt).
Please visit our website for more details

Updated: March 2026

chromEnergy

Continuous natural gas measurement

Automated system for measurements in the range: ppm or %



Description:

The chromEnergy is an industrial gas chromatograph for analysis and monitoring of C1C6+ in natural gas and gaseous fuels by TCD detection.

Principle:

- Automatic sampling using a loop
- Loop injection by automatic valve on the column
- Back flush column for C6+ analysis and column cleaning
- Isothermal gas chromatograph
- Detection of all compounds eluting from the column performed by the micro TCD detector

chromEnergy -D is a double GC with 2 TCD for faster analysis and more compounds

Key points:

- Continuous monitoring with automatic online sampling
- A pressure safety is located at detector outlet to protect the filament
- Calorific value unit is configurable on request
- Low maintenance instrument
- Full traceability of results and calibration, more than 10 years data storage
- Automatic control with process device
- Intelligence system with tunable and interactive alarms levels
- Powerful VISTACHROM® Chromatotec® software included in the flow computer:
 - Remote monitoring & injection control
 - Full traceability with on board archiving of results and chromatograms
 - QC Set up and control of threshold alarms
 - Data export by MODBUS / 4-20 mA / 0-10 V
 - Time stamp results
 - Algorithms using analog and digital signals received from flowmeters, temperature, pressure and density transmitters

Available options:

- Explosion proof Exd box
- Multiple stream selector (up to 16 streams with one analyzer)
- Calculation modules (average / statistics / heating value...)
- Module 4-20 mA / 0-10 V 4 output and 0 mA for instrument default
- Electric selection valve to reduce air consumption
- Gas cleaner
- 24 V DC power supply
- Carrier gas purificator
- H₂S measurement at low ppm range
- Temperature Regulation (Heating and Cooling)
- Alarm Driver (available in RTDB)
- H₂ analysis in option
- Dew point sensor integration
- Flow control with 4-20 mA

Technical specifications:

Detection limit:

- Down to 10 ppm on Hexane

Detection range:

- ppm to %

Relative Standard Deviation: Repeatability:

- RSD from 3 % to 0.5% over 48 h (concentration)
- RSD < 0.5 % over 48 h (retention time)

Supervisor:

- Embedded computer Windows® based with LCD display
- 32 GB of Hardware storage on SSD memory

Communication:

- Communication protocol MODBUS
- 4-20mA
- Ethernet

Cycle time:

- 10 minutes for C6+ / N₂ / CO₂ / C1 / C2 / C3 / IC4 / NC4 / NeoC5 / IC5 / NC5
- 10 minutes CH₄ / CO₂ / O₂ / N₂
- 5 minutes in option

Gas supply:

- Carrier gas : He (4 bar; 1/16") : 18 ml/min
- Calibration inlet: 1 bar; 1/16"
- Sample inlet: 1 bar; 1/16" : 20ml/min
- Pneumatic valve 90 ml/commutation (0 ml in option)

Power supply:

- Main (230 V / 115 V 50 Hz/60Hz)

Electric consumption:

- Average: 100 VA; Peak: 200 VA

Dimensions and weight:

- Rack: 19" (5U)
- Height: 222 mm
- Width: 482 mm
- Depth: 660 mm
- Net weight of analyser: 22 kg

[CLICK HERE FOR ADDITIONAL DIMENSIONS DETAILS](#)

To order:

Model:

| | |
|--------------------------------------|----------------------|
| chromEnergy (integrated computer) | C42022 |
| chromEnergy-D | C42022-D |
| chromEnergy ATEX Z1 | C42022-Z1-Exd-ATEX |
| chromEnergy-D ATEX Z1 | C42022-D-Z1-Exd-ATEX |
| C1D2 certification | XXX061 |
| Stainless steel wall-mount box (304) | XXX934 |

Chromatotec® is continuously improving its products, therefore these specifications are subject to change without notice



To contact us: sales@chromatotec.com

NORTH AMERICA
Houston - USA

EUROPE
Bordeaux - FRANCE

ASIA
Beijing - CHINA