

In Europe

15 Rue d'Artiguelongue
33240 SAINT-ANTOINE - FRANCE
Tel : +33 (0)557940626 Fax : +33 (0)557940620
E-mail : info@chromatotec.com

CHROMATOTEC

In USA

18333 Egret Bay Suite 270
HOUSTON TX 77058
Tel : +1 281 335 4944-Fax : 1 281 335 4943
E-mail : info@chromatotec.com



EXPERTS IN GAS ANALYSIS

**Customer care : From 9 a.m. to 6 p.m., we are at your entire disposal for service
gas analyzer / software / computer/ maintenance and calibration.**

Chromatotec Bulletin

Issue – May 2006

SUMMARY

Success of our BTEX analysers	p1
MEDOR applications	p1
Exhibitions 2006	p1
airMEDOR ppt	p1
Short News	p1
Formaldehyde and Acetaldehyde in air and pure gas	p2
Modbus/Jbus - MGS1 Protocols	p2
Chroma S linearization	p2

Welcome to our
booth K41 Hall 10.1

SUCCESS OF OUR BTEX ANALYSERS

Our **airTOXIC BTEX PID** as well as
our **airmoBTX with FID detector** both
achieve great success worldwide with
increasing market shares in Europe and in
the Middle East.

CHROMATOTEC proposes you two
certified models with **in-built computer
and calibration included** for your BTEX
measurements based on **two different
technologies**:

airTOXIC with PID detector (CNR Certification)

- edge of the system: **auto-
cleaning of the lamp and 1 gas
is needed**

airmoBTX with FID detector (TÜV certification)

- Edge of the system:
visualisation of a **larger range
of hydrocarbons**

Advantages of both instruments:

- High sensitivity
- High linearity
- High stability
- Auto-calibration , high precision



airTOXIC inside view

We will be glad to meet you on
our booth K41, Hall 10.1
during the **ACHEMA Fair**
from 15th to 19th May in
Frankfurt am Main for
showing you our latest
developments.



MEDOR applications

The **M E D O R** range of **CHROMATOTEC**
analysers is mainly dedicated to sulphur
compounds. Among the major demands we find:

- ➔ H₂S/MeSH
- ➔ Mercaptans
- ➔ THT
- ➔ DMS/DMDS
- ➔ Total reduced sulphur

These are not the only sulphur compounds the
MEDOR technology analyses, for instance **COS**.
The **COSMEDOR** has the particularity to use a
specific wet cell for the detection.



The MEDOR technology is also used for other
compounds such as **chlorine (Cl₂)**.

Increasing regulatory pressure has produced great
interest in monitoring for chlorine in:

- stacks
- ambient air
- process streams

The **environmental concerns** related to Cl₂ are an
important factor. It is toxic and corrosive and
often considered to be a dangerous compound.
These concerns have pushed desired detection
limits to low PPM and in some cases PPB levels.

Our **MEDOR Cl₂** is a gas chromatograph
dedicated to Cl₂ analysis. Like many of
CHROMATOTEC models it is available in the
in-built computer version.

In addition to Cl₂, the MEDOR Cl₂ (Ref M12022)
can analyse H₂S. Moreover Cl₂ analysis is
proposed as an additional compound in the
airMEDOR instrument (Ref XM1200).

Send us your emails
to receive our News
every two months



Send your inquiry to info@chromatotec.com

airMEDOR ppt "More sensitive than human nose"



The analyser airMEDOR PPT has recently reached extremely low levels of sensitivity, beyond human olfactive perception!

The challenge of one of our latest applications was that the airMEDOR would be able to detect sulphur compounds before it would be detected by a human being.

This kind of application is to improve air quality around places that produce bad smells such as waste water stations, waste compaction stations, paper industry from wood,...

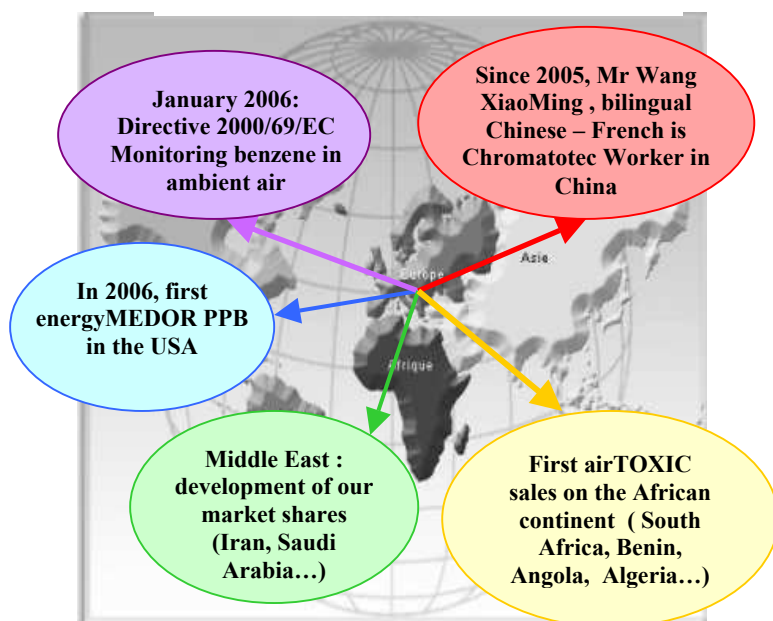


Waste water station



Waste compaction station

Just a few words on...



CHROMATOTEC

In Europe

15 Rue d'Artiguelongue
33240 SAINT-ANTOINE – FRANCE
Tel : +33 (0)557940626
Fax : +33 (0)557940620

In USA

18333 Egret Bay Blvd, Suite 270
HOUSTON TX 77058
Phone: 281 335 4944
Fax : 281 335 4943

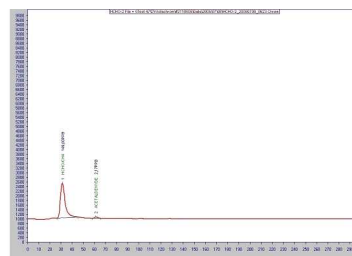
In China

Mr Xang Xiaoming

Room 1301 Building 8 Tianshuixiyuan- Chaoyang District- 100026 BEIJING
Phone: +86 10 85 96 76 59 – Fax : +86 10 85 96 55 35

Formaldehyde and acetaldehyde application in air and pure gas

- Precise measurement at low levels (PPB level) with our airmo HCHO with FID detector
- Applications :health and safety monitoring (CO₂ quality for beverage and food industry), screening, indoor air quality
- Analysis after methanization in PPB range with calibration as recommended option
- Total cycle time : 15 minutes



Modbus / JBus – MGS1 Protocols

Software package dedicated to a **bidirectional communication** between the computer and the data-logger by a **RS232 connection**.

This communication protocol allows visualizing the **results remotely** and it is a useful tool for statistics and **trends**. This protocol allows transferring data, commands, status and errors.

New developments

Chroma S linearization

For a **Flame Photomultiplier Detector**, the signal is **not linear** in relation to the injected quantity . So we have integrated a **software correction** for every component:



The linearization consists of an **information technology system** that allows compensating the **non-linear response** of the Flame Photomultiplier detector.

Send your inquiry to info@chromatotec.com