

Bu-SH

DMDS

H<sub>2</sub>S

MeSH

DMS

THT

Total Reduced Sulphur  
(TRS)

EtSH

TBM

Gas Analyser GC866

M10 ppb

airMEDOR<sup>®</sup>

M11 ppm

ambient air ppb sulphur compound analyser  
a continuous analyser dedicated to sulphur compounds  
ISO 6326/2 norm and DIN 51855/7.



Beverage & Food Industry

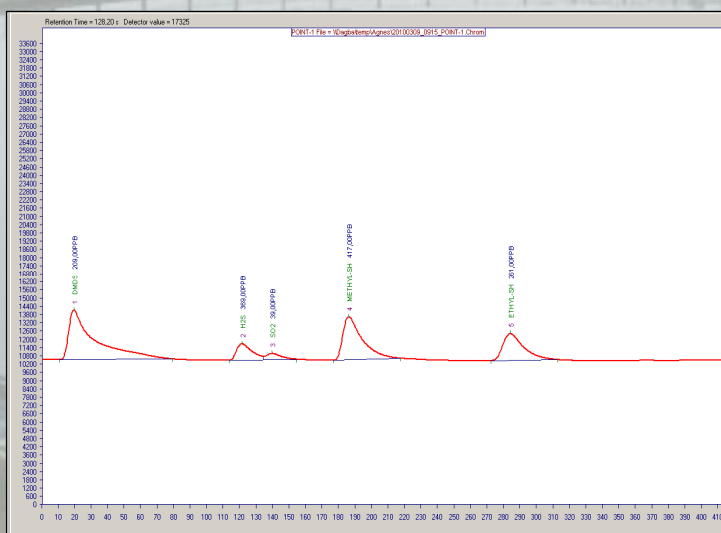
Environment PPB

Toxicity PPM

Fermentation control  
CO<sub>2</sub> quality at brewery

Process monitor  
Odour control

H<sub>2</sub>S  
Methyl Mercaptans



Chromatotec is specialised in VOC, sulphur and permanent gases  
analysis at trace and ultra trace levels (ppm, ppb, ppt).  
Feel free to visit our web site for more details:

<http://www.chromatotec.com>

Printed Matter Reference: TSP M11\_010E airMEDOR\_071121.doc

# airMEDOR®

ambient air ppb sulphur compound analyzer

## • Principle :

The airMEDOR is a gas chromatograph dedicated to the sulfur compound analysis (H<sub>2</sub>S, mercaptans sulfides and Disulphides) present in different matrices.

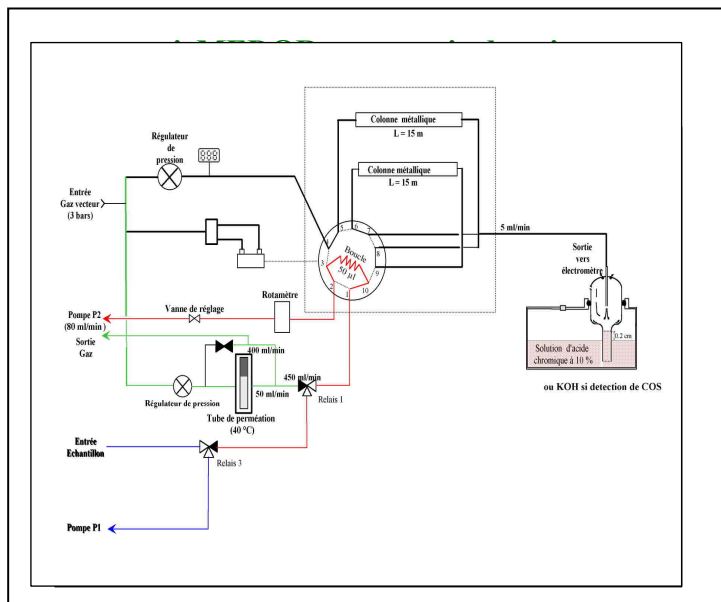
- ⇒ An electro-chemical detector allows the specific detection of sulphur species.
- ⇒ The detection is made by a gas-liquid reaction avoiding any alteration of the cell.
- ⇒ The cell life time can be over 10 years.

**Automatic data validation with internal calibration using a permeation tube is included as standard.**

The Vistachrom software enables the user to visualize and store data on a PC. Furthermore it provides comfortable utilities to recalculate, calibrate and export data and to set-up measurement. The airmoTREND software allows the calculation of retention time, area, mass or concentration profiles.

## • Options :

- On-line results are transmitted via a MODBUS / JBUS or MGS1 communication protocol.
- Analog output 4-20 mA or 0-10 V.
- 24 V power supply for transportable analysers.
- Multiplexer 6 to 12 streams
- Generator dry air
- N<sub>2</sub> generator
- Possible integration in a cabinet



## • Technical specifications products :

### Reduced sulphur compounds analysis :

Speciation or total sulphur.

**H<sub>2</sub>S / Mercaptans / Sulfides / DiSulfides**

### Detection limits : (ppb available)

- H<sub>2</sub>S : 1 ppb (1,40 µg/m<sup>3</sup>)
- DMS : 0.5 ppb (1,3 µg/m<sup>3</sup>)

### Detection range :

**Programmable in PPB (250µ) or PPM (50µ)**

**0/10 PPB or 0 / 50PPB**

**0/100 PPB or 0 / 500PPB**

**0/1 000 PPB or 0 / 5 PPM**

### Relative Standard Deviation :

RSD < 5% on concentration over 48H.

RSD < 0.6% on retention time over 48H.

### Results :

- Hardware storage
- MODBUS communication protocol (optional)
- 4-20mA (optional)

### Cycle Time :

- H<sub>2</sub>S/MeSH 90s
- H<sub>2</sub>S, mercaptans 300s
- Total reduced sulphur 120s
- H<sub>2</sub>S, mercaptans, THT 1200s

### Gas supply :

Carrier: Dry air or N<sub>2</sub> (3 bars) : 5 ml/min.

CALIB: in continus mode 50 ml/min.

CALIB during validation ~ 300ml/min

### Power supply :

Main (230V / 115V 60 / 50 Hz)

- Battery 24V (optional)

### Electrical consumption :

150 VA

### Dimension :

- Rack 482 mm (19")
- Height: 177 mm, Depth 600 mm (4u)

### Weight :

15 kg

### Printed Matter Reference :

TSP-M11-010F-airMEDOR-071121.doc



## CHROMATOTEC

15 Rue d'Artiguelongue

33240 SAINT-ANTOINE - FRANCE

Tel: +33 (0)557940626 Fax: +33 (0)557940620

www.chromatotec.com

e-mail: info@chromatotec.com

Due to Chromatotec continuing program on product improvements, specifications are subject to change without notice