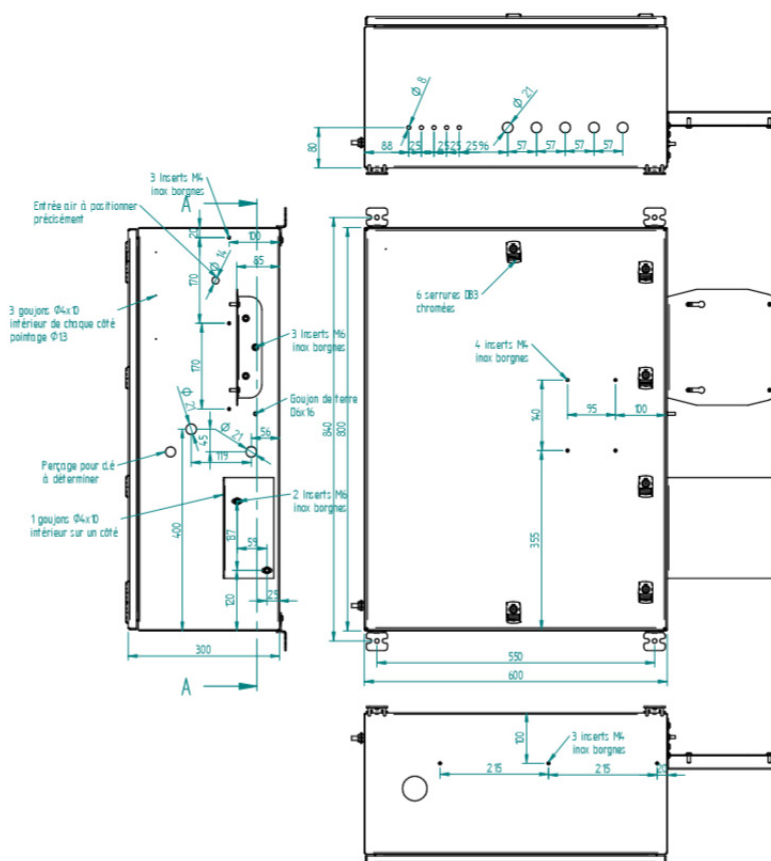


Integration in pressurized wall mounted cabinet IP 66
ATEX or IECEx: Zone 1 and 2 - **II 2 G Ex pxb IIC T4 Gb**
Ta=Up to -20°C to +55°C
CSA Class 1 Division 2 T4



WWW.CHROMATOTEC.COM

Exp cabinet

Integration in pressurized wall mounted cabinet IP 66



Description:

Exp cabinet can integrate industrial gas chromatograph for the analysis and monitoring of impurities in natural gas and gaseous fuels.

Color touch screen is integrated on the front door for direct access of the analyzer computer without the need to open the cabinet.

Inbuilt gas generators are available in option for operating gas (pneumatic actuation, CALIB dilution, etc.) and carrier gas from instrument air in case of nitrogen or zero air is required. The autoGC is totally autonomous and cylinder free. The purge system need external compressed air for operation.

Only electricity is required for operation.

Internal temperature of the cabinet is monitored by the GC for diagnostic.

Can be integrated in the following analyzers:

- MEDOR
- chromaPID
- chroma TCD
- chromaFID
- airmoVOC
- airTOXIC

Options:

- Multiplexer: 2 to 32 streams
- Electric selection valve to reduce air consumption
- Inbuilt nitrogen generator for hazardous area from instrument air or from external compressor
- Liquid Injection valve for LPG or up to condensate analysis
- Sampling valve for high concentration up to % level
- Internal temperature control system using electric heater / VORTEX/electric peltier cooler (XXXPelt Ex only for Zone 2)
- 4G module
- Sampling pump (XXX901 ATEX or CSA)
- Thermal insulation (XXX Insul Ex)
- Automatic validation and calibration with internal CALIB
- 24 V DC power supply
- Internal or external multipoint calibration and zero with CALIB MFC, XXXCYL MFC, airmoCAL 200
- Liquid sampling system with pressurized headspace for sulfurs and/or VOC extraction from liquid phase (XXPurge HS)
- Painting of the system for offshore use
- MODBUS RTU / JBUS communication protocol

Product technical specifications:

Material:

Stainless steel 316

Supervisor:

- Full result storage (data and chromatogram)
- Embedded computer Windows® based with LCD display
- 128 GB of Hardware storage on SSD memory
- 4 USB Connecting Port
- Two RS-232 ports
- Display: 10" TFT Color LCD Touch screen

Operation Temperature:

- Room with air conditioning: 10 to 25°C
- With thermal insulation: -20 to 40°C (depending on application)
- With thermal insulation and vortex cooler or electrical peltier cooler : -20 to 55°C

Dimensions:

- Height: 800mm
- Width: 600mm
- Depth: 300mm

Weight:

- Net weight: 55 kg

Gas supply:

- Protection mode by continuous air flow (30 l/min of air in standard) with an inlet pressure comprise between 2 and 4 bar.

To order:

XXX060-ATEX-Z2
XXX060-ATEX -Z1
XXX060-X-CSA

Chromatotec® is continuously improving its products, therefore these specifications are subject to change without notice

To contact us: sales@chromatotec.com

NORTH AMERICA
Houston - USA

EUROPE
Bordeaux - FRANCE

ASIA
Beijing - CHINA

WWW.CHROMATOTEC.COM