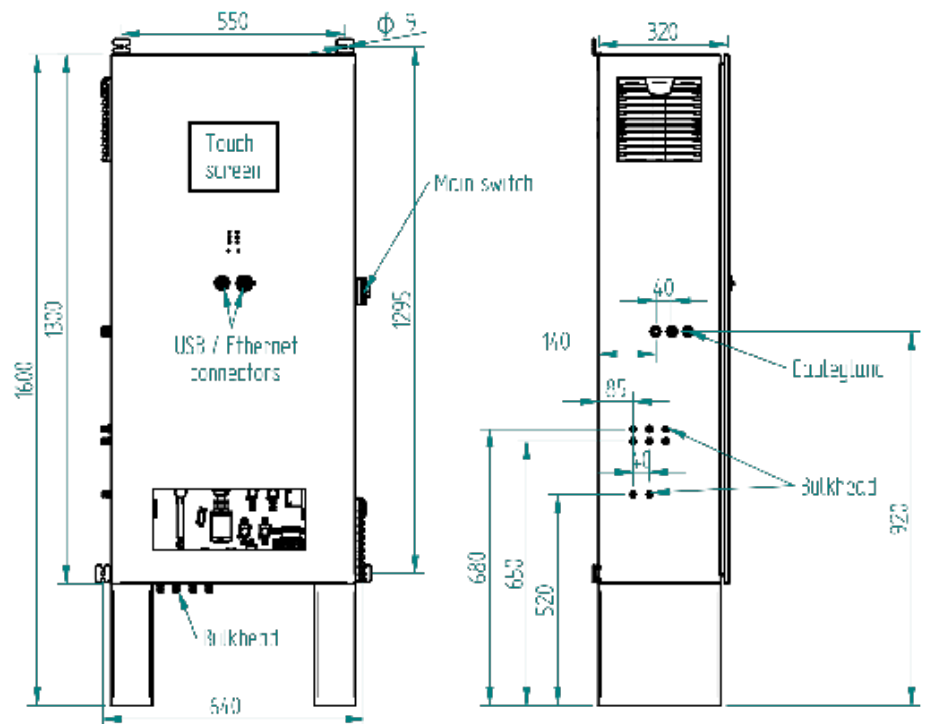


Wall mounted cabinet  
Integration of 1 analyzer and 1 or 2 generators  
or 2 analyzers

## autoGC with peripherals



Liquid sampling  
module



Model: XXX934-G



SCAN or CLICK ME



*Chromatotec® is specialised in VOC, Sulfur and permanent gases analysis at trace and ultra trace levels (ppm, ppb, ppt).  
Please visit our website for more details.*

**Updated: August 2020**

# Process GC

Wall mounted cabinet



## Description:

Wall mounted cabinet suitable for industrial area with up to IP66 enclosure in stainless steel 316.

Color touch screen is integrated on the front door for direct access of the analyzer computer without the need to open the cabinet.

With inbuilt gas generator for operating gas and carrier gas, the autoGC is totally autonomous and cylinder free.

Only electricity is required for operation.

Internal temperature of the cabinet is monitored by the GC for diagnostic.

## Can integrate the following analyzers:

- airmoVOC
- airTOXIC
- chromaFID
- chromPID
- chromaTHC
- chromaTCD
- MEDOR range
- Vigi e-nose
- DET NH3
- GPC

## Options:

- Hydrogen, Nitrogen and zero air generators
- Multiplexer: 2 to 32 streams
- 4G module
- Sampling pump (XXX901)
- Thermal insulation (XXX Insul Ex)
- VORTEX cooler (XXXVORT Ex)
- Automatic validation and calibration with internal CALIB
- 24 V DC power supply
- Internal or external multipoint calibration and zero with CALIB MFC, XXXCYL MFC, airmoCAL 200
- Liquid sampling system with pressurized headspace for sulfurs and/or VOC extraction from liquid phase (XXPurge HS)
- Purge and trap for VOC extraction from water
- MODBUS RTU / JBUS communication protocol

## Product technical specifications:

### Material:

Stainless steel 316

### Supervisor:

- Full result storage (data and chromatogram)
- Embedded computer Windows® based with LCD display
- 128 GB of Hardware storage on SSD memory
- 4 USB Connecting Port
- Two RS-232 ports
- Display: 10" TFT Color LCD Touch screen

### Operation Temperature:

- Room with air conditioning: 10 to 25°C
- With thermal insulation: -20 to 40°C (depending on application)
- With thermal insulation and vortex cooler: -20 to 55°C

### Dimensions without sampling module:

- Height: 1000mm
- Width: 600mm
- Depth: 300mm

### Dimensions with sampling module:

- Height: 1440mm
- Width: 600mm
- Depth: 300mm

### Weight:

- From 45 to 70 kg

### To order:

### Model:

For 1 analyzer and 1 or 2 generators or 2 analyzers

XXX934-G

1 analyzer or 2 generators

XXX934-S

1 or 2 generators

XXX934

*Chromatotec® is continuously improving its products, therefore these specifications are subject to change without notice*

To contact us: [sales@chromatotec.com](mailto:sales@chromatotec.com)

**NORTH AMERICA**  
Houston - USA

**EUROPE**  
Bordeaux - FRANCE

**ASIA**  
Beijing - CHINA

**WWW.CHROMATOTEC.COM**